

Building Expansion Needs

Total Project Cost (estimated as of 12/90)\$3,792,504

Student Services Building

- Classrooms8,800 square feet
- Child Care Center3,930 square feet
- New Entrance/Reception Area1,925 square feet
- Student Union8,820 square feet
- Student Service Offices.....3,920 square feet
- Library/Media5,675 square feet

Total 33,070 square feet

Building Remodeling Needs

Master Facility Utilization Planning

Estimated Cost\$30,000

Program Mix

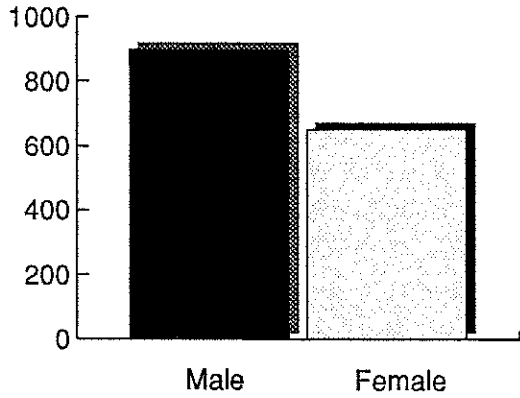
- 39 major programs of study (inventory)
- 5 joint programs of study with other colleges

	1990 - 91	
	FTE	FYE
Construction Technology		
Building Construction Drafting and Estimating	4.08	87.61
Heating and Air Conditioning	1.00	20.62
Carpentry	2.46	46.95
Electrical	1.96	38.13
Plumbing	1.08	24.66
General Studies	6.07	137.97
Developmental	.09	8.33
Health/Human Services Technology		
Chiropractic Technician	1.77	22.66
Dental Assistant	2.45	31.80
Practical Nursing	5.24	110.32
Surgical Technician	2.04	25.93
Optometric Assisstant	0.97	11.81
Developmental Needs Assistant	2.00	38.17
Culinary Arts	1.07	10.84

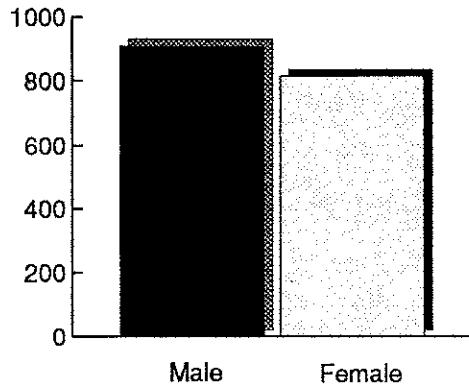
Manufacturing/Engineering Technology	FTE	FYE
Civil Engineering Technology	2.15	26.86
Electronics Technology	1.06	19.68
Instrumentation Technology	2.24	34.13
Consumer Electronics Technology	0.79	13.13
Drafting and Design Technology	2.05	41.09
Water and Wastewater Treatment	2.35	46.40
Graphic Arts	2.32	44.17
Machine Shop	3.28	58.68
Industrial Welding	0.98	17.02
Marketing Technology		
Advertising	3.18	61.93
Credit and Finance	1.86	40.57
Real Estate Sales	0.85	10.80
Postal Service Management	0.43	9.40
Materials Management	0.95	12.40
Wholesale/Retail Marketing Careers	5.59	100.24
Farm Business Management	3.24	31.66
Small Business Management	1.08	4.20
Office Technology		
Computer Careers	2.58	43.08
Administrative Support Careers	5.27	75.63
Accounting Careers	4.42	114.15
Transportation Technology		
Auto Body Repair	1.80	18.22
Automotive Mechanics	4.13	54.51
Heavy Truck and Diesel Engine Mechanics	1.64	16.00
Grand Totals	86.52	1509.75
Customer Services	N/A	235.26

Student Demographics

Headcount Fall 1989
Total = 1,547

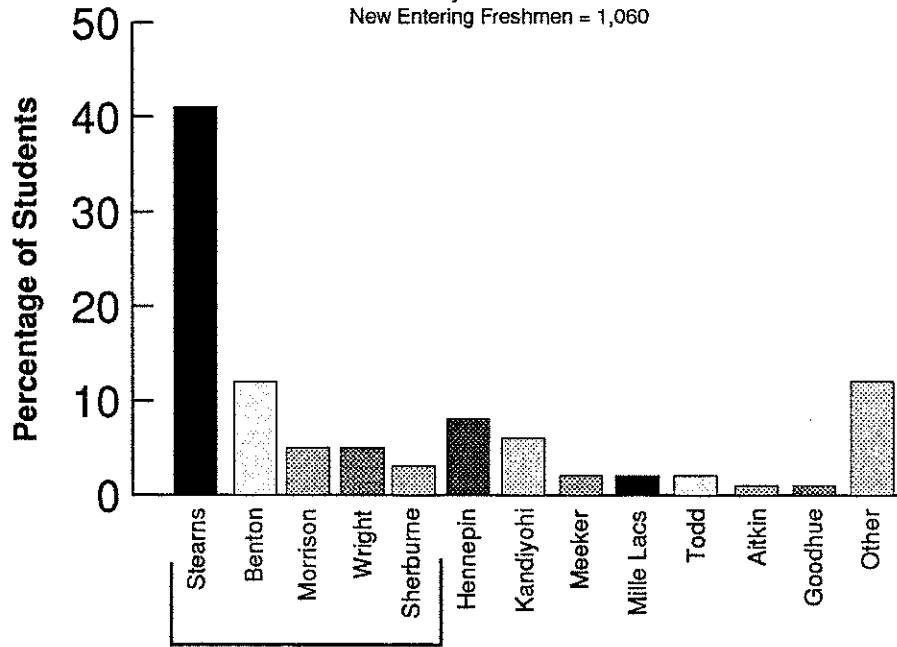


Headcount Fall 1990
Total = 1,723



County Breakdown Fall 1990

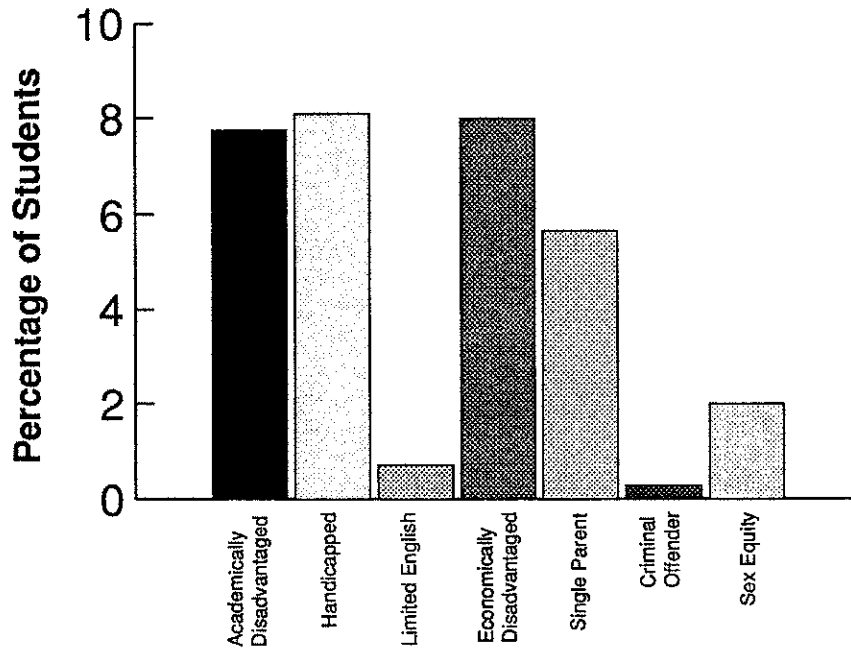
Based on County of Permanent Residence
New Entering Freshmen = 1,060



Five County Area = 66%

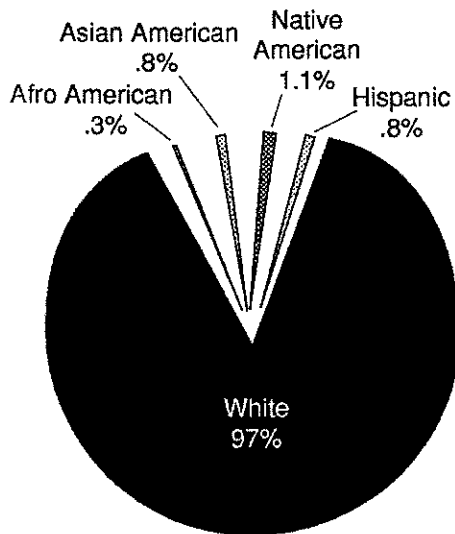
Student Demographics Continued

Target Populations Served 1990 - 1991



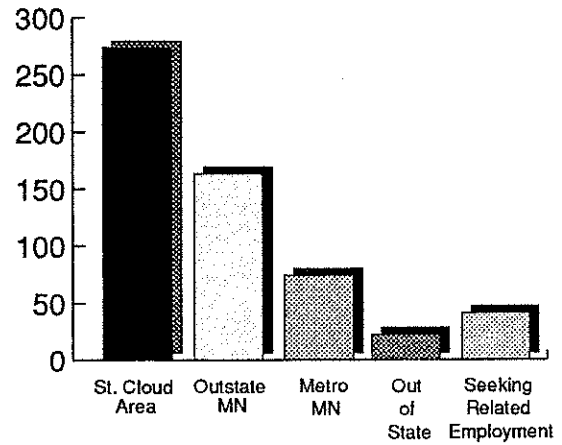
Ethnic Background 1990 - 1991

Total Headcount = 2,284



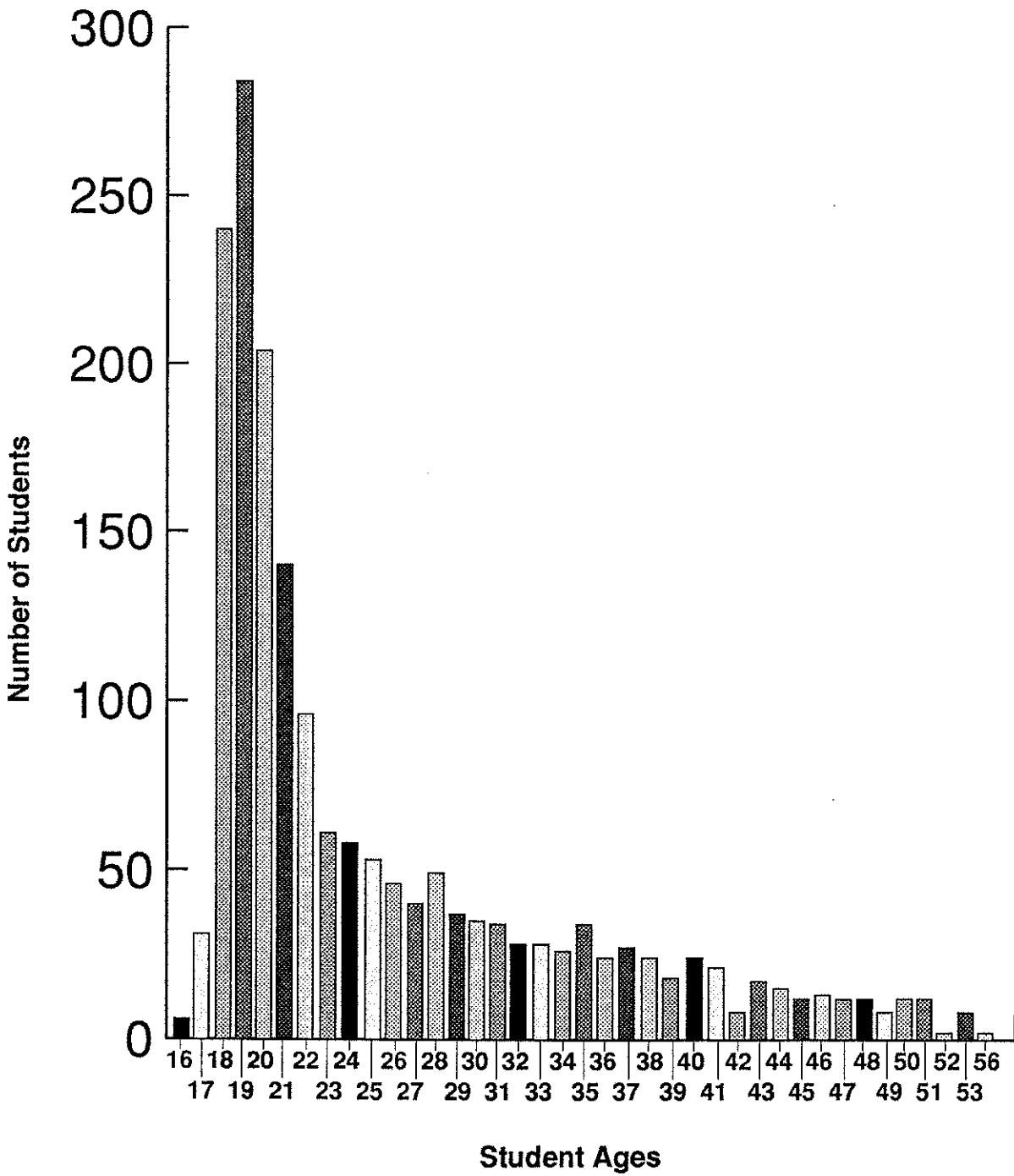
Placement of Graduates 1990

Of 645 Graduates, 573 Were Available for Employment



Geographical Breakdown

Student Demographics Continued





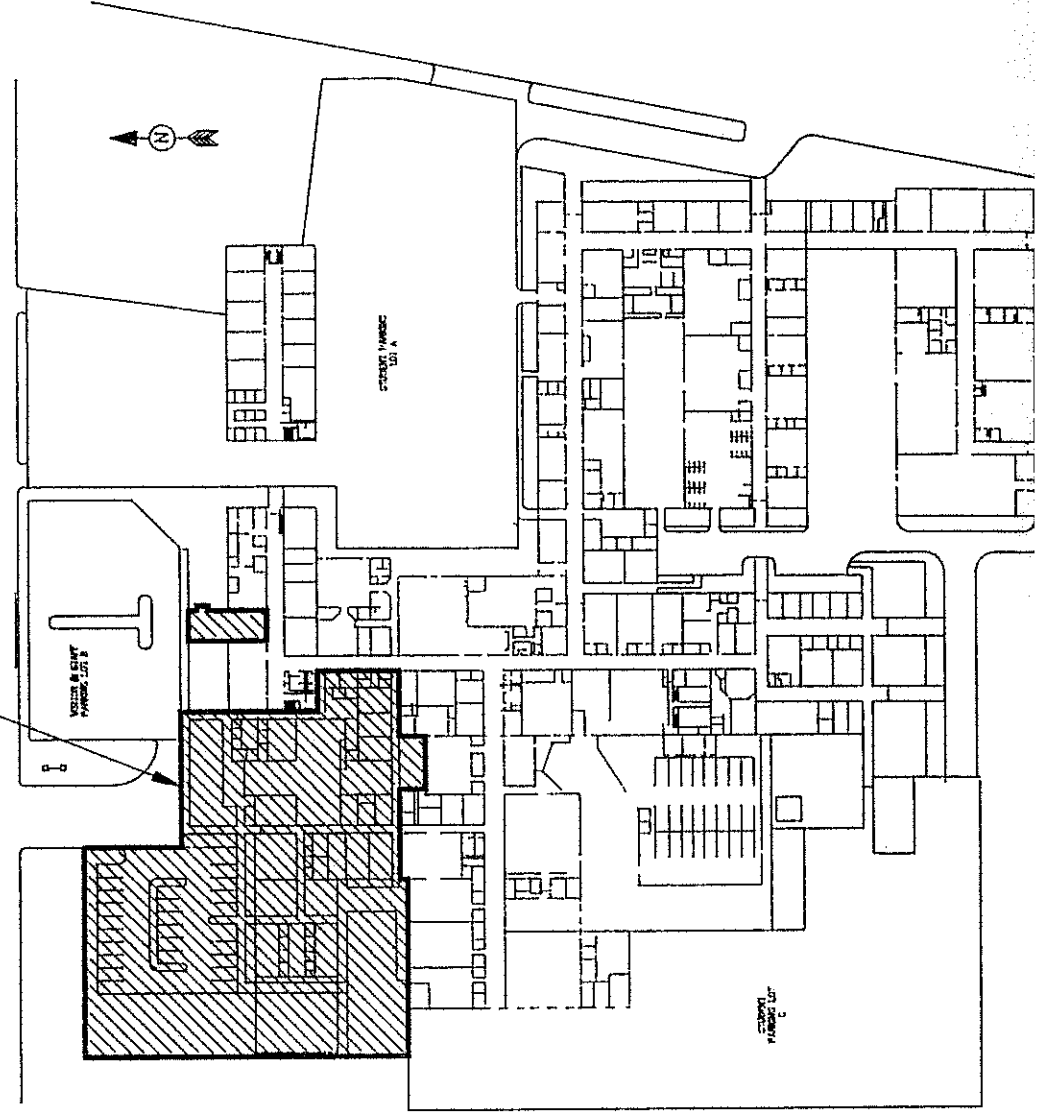
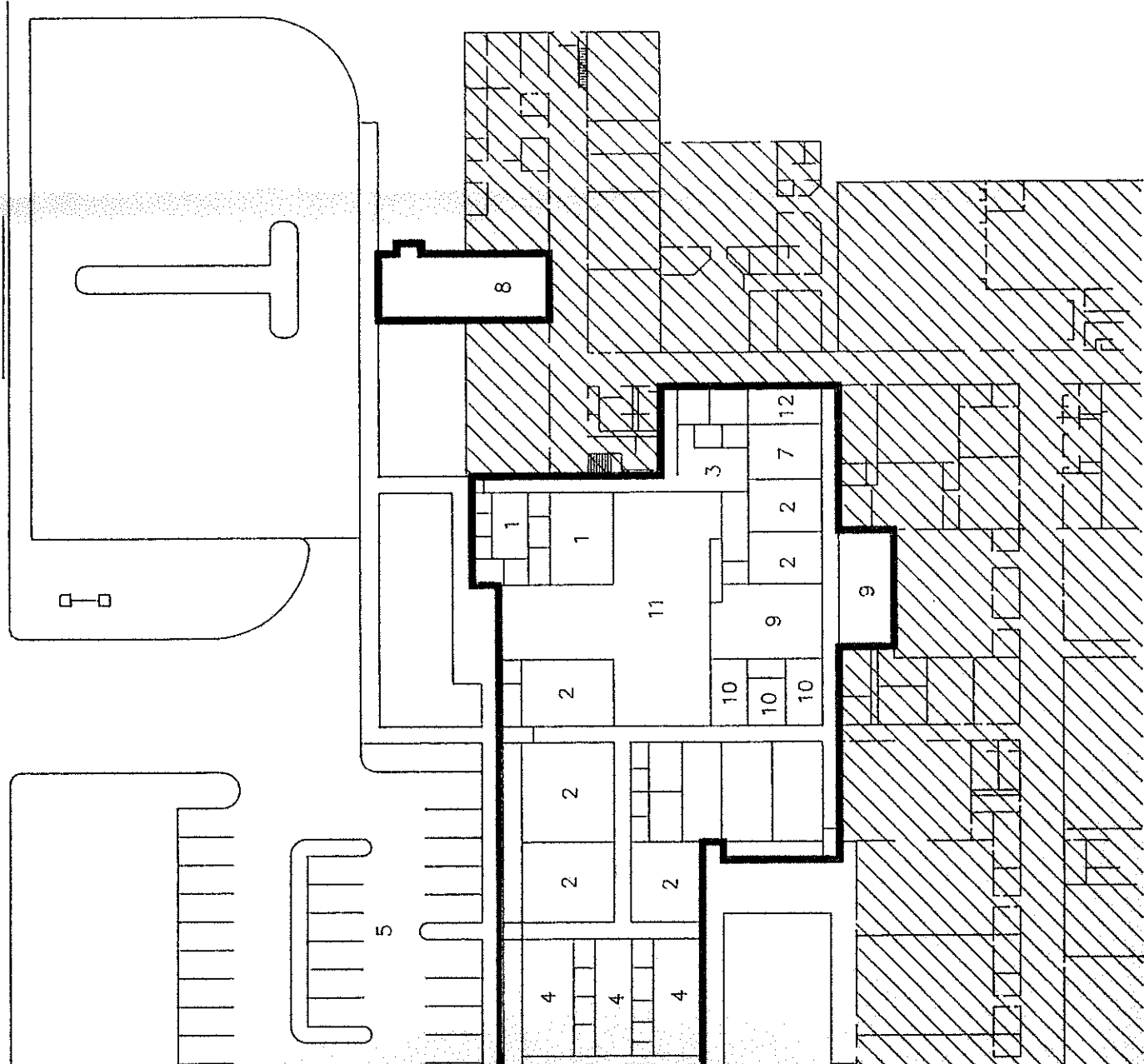
St. Cloud Technical College

1540 Northway Drive St. Cloud, MN 56303-1240 (612) 252-0101

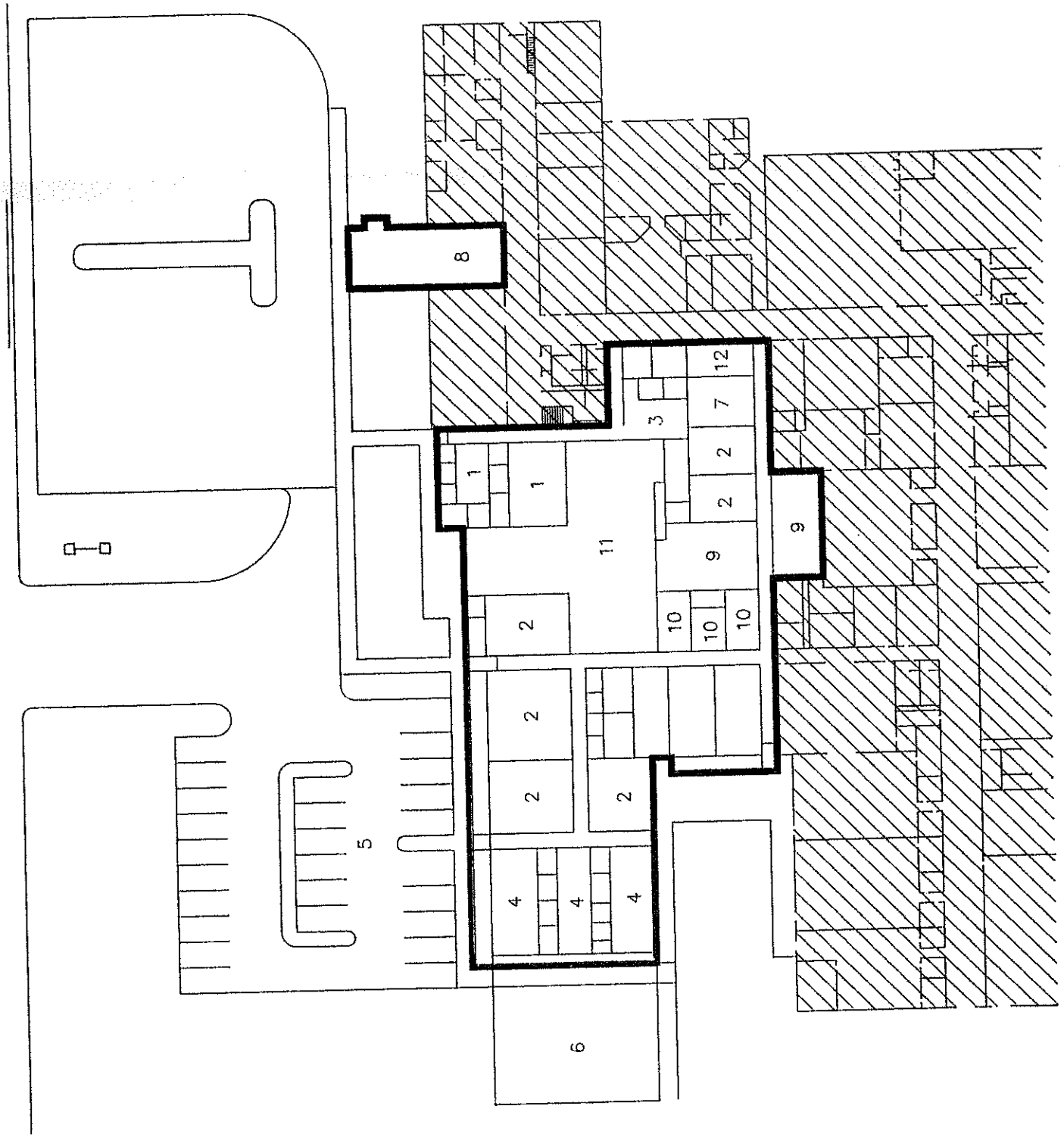
Support Services Addition Project Rationale

1. The demographics of the city of St. Cloud and surrounding three counties indicate projections of population growth and business/industry expansions. Three additional elementary schools opened doors in fall of 1990 and are already proving inadequate. This growth is expected to continue for several years. According to Tony Goddard, President, St. Cloud Area Economic Development Partnership, Inc., St. Cloud is not only the fastest growing city in Minnesota, it is the fastest growing metropolitan area in the northern half of the United States.
2. Enrollments have been strong the past few years with the exception of a drop in 1989. There have been increases in 1990 and 1991. Enrollments are expected to continue increasing as they reflect the economic and population growth in the St. Cloud area.
3. Economists have indicated that any decrease in Minnesota's general economy will have little effect on the on-going economic health of St. Cloud and the surrounding area.
4. Student placement has been strong, with all programs exceeding requirements. The increase in numbers of female students parallels the increase of employers who seek to hire women in traditional and non-traditional occupations.
5. St. Cloud Technical College is the only two-year college in the St. Cloud service area has been and is increasingly important to the growth and economy of this area.
- 6-11. The recent implementation of the restructured curriculum from hour to credit configuration has resulted in the following needs:
 - More class space due to the increased demand for General Studies courses.
 - More lab space due to increased demand for computer literacy.
 - More office and conference space due to the advisor/advisee responsibilities of staff.
 - More comprehensive library space and collections due to the restructured curriculum which holds the student accountable for more independent study of content.
 - Increased library resources and collections due to the AAS majors.
 - Increased library resources due to North Central Accreditation requirements.
12. The college needs to respond to the students' need for a student union area which is of paramount importance due to (restructured) schedules, which allow students more time between courses to relax, study and socialize. The only space we have at the present time is the cafeteria.
13. Also, most important, St. Cloud Technical College needs a day care facility. As with other colleges, SCTC is experiencing an increase in mature students, many of whom are parents who have a need for day care. St. Cloud Technical College is one of the few campuses without a day care facility to meet student needs.

- NEW ADDITION
- | | |
|-----------------------|----------------------------|
| 1 ASSESSMENT | 7 INTERACTIVE TV CLASSROOM |
| 2 CLASSROOM | 8 NEW RECEPTION AREA |
| 3 CUSTOMIZED TRAINING | 9 RESOURCE CENTER |
| 4 DAYCARE | 10 SPECIAL NEEDS AREA |
| 5 DAYCARE PARKING | 11 STUDENT COMMONS |
| 6 DAYCARE PLAYGROUND | 12 OFFICES |



- 1 ASSESSMENT
- 2 CLASSROOM
- 3 CUSTOMIZE
- 4 DAYCARE
- 5 DAYCARE
- 6 DAYCARE



SCALE
1/8" = 1'-0"